

## Covid19 update

We are continuing to work in bubbles and have introduced the use of face masks at close contact care times such as nappy and mealtimes. This is to protect both staff and children from transmitting the virus to one another. All parents must also now wear masks at drop off and collection. Thank you for your ongoing support.

Due to current Covid19 restrictions our usual staff training day which is held on the first weekday of the year (Monday 4th January 2021) has been postponed to Monday 5th July 2021. Therefore, on Monday 4th January 2021 we will be operating as normal.



### Lambs

The Lamb's children have enjoyed learning about the different colours of the rainbow linking to our colour monster book. We created colour collages and rainbows.

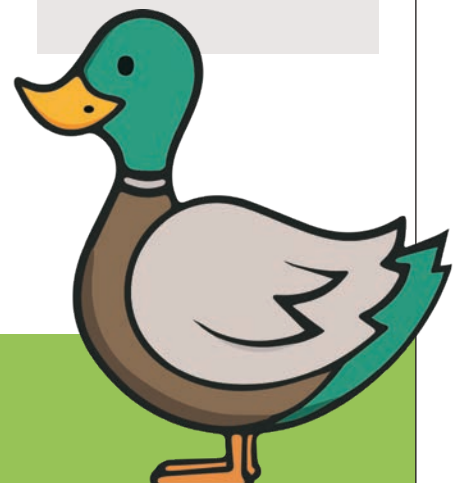
### Farmers

The farmer's children have been exploring and understanding different emotions through the colour monster story. We explored the different colours and created our own emotion stone to represent how we were feeling.



### ROUTINE SUPPORT PACKS.

We will be creating routine support packs for parents, these will include information on toileting, sleeping and the use of dummies. If there is anything specific you require support with, please let us know.



Our Contact Details are as follows:-

Tel – 01706 655000 – Email: [ffn1@fisherfeldchildcare.co.uk](mailto:ffn1@fisherfeldchildcare.co.uk)

Or keep in touch with iConnect/ParentZone,  
please ask a member of staff if you need help



## Halloween

We have enjoyed celebrating Halloween, the children loved their end of term party and taking part in pumpkin carving activities.

---

**QUESTION OF THE MONTH**  
Is your child registered with a dentist?

## Dates for your Diary

**Christmas Jumper Day Friday 11th December**

**Christmas Party Week Monday 14th December 2020 to Friday 18th December 2020**

**Term ends - Friday 18th December 2020**

**Nursery closes - Thursday 24th December 2020 @ 1pm**

**Nursery re-opens Monday 4th January 2021**

Our Contact Details are as follows:-

Tel – 01706 655000 – Email: [ffn1@fisherfeldchildcare.co.uk](mailto:ffn1@fisherfeldchildcare.co.uk)

Or keep in touch with iConnect/ParentZone,  
please ask a member of staff if you need help