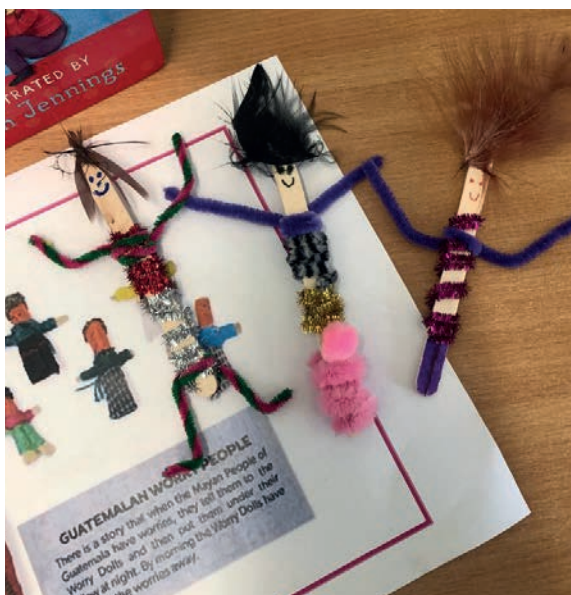


## Welcome Back to Nursery!

We would like to take the opportunity to welcome back our staff and children to nursery. We have all been taking part in lots of fun activities and enjoying our time back together! Here are some of the exciting activities that we have been taking part in.

### Worry Dolls

The Children and Ladies have been making our own worry dolls! 'There is a story that when the Mayan People of Guatemala have worries, they tell them to the worry dolls and then put them under their pillow at night. By morning the Worry Dolls have taken all of the worries away'. We explored our own feelings, and talked about how we feel, we looked in the mirrors to see if our faces looked, happy, sad, worried, scared, angry and drew these faces onto our worry dolls. We said that we could even tell the dolls other feelings that we had such as if we were scared about going to school, happy to be back in nursery and that the dolls would keep all our feelings safe.

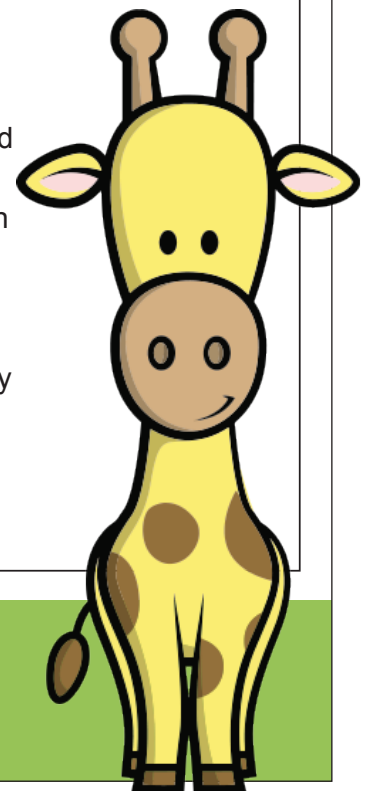


### Gingerbread Man

Following on from the children's interests, and what they have been doing at home, we have been carrying out activities around the Gingerbread Man story. We have read the book together, and made our own props. Anne the cook, made us a GIANT Gingerbread Man which we decorated, and then ate for our pudding, and we created our very own Gingerbread Men, which have been displayed at nursery for everyone to see!

### Garden Visitors

We have some extra special visitors nesting in our garden! A mummy and daddy blackbird have made a home in our garden bushes and have been nesting on their eggs waiting for them to hatch! We have made some bird feeders with cereal for the birds incase they are hungry when looking after their babies, and we will keep you updated if we see any chicks!



Our Contact Details are as follows:-

Tel – 01706 352000 - Email: [ffn3@fisherfeldchildcare.co.uk](mailto:ffn3@fisherfeldchildcare.co.uk)

Or keep in touch with iConnect/ParentZone,  
please ask a member of staff if you need help



## People who Help Us

Following on from children's experiences of lockdown, they shared with us about the special clap that they took part in every Thursday, how their mummies and daddies have been working (in hospitals, in the shops, posting letters, looking after children, and taking people food) we decided to explore a bit more with the children about people who help us, and who are special within our community. We have made rainbows, we made our science lab exploring 'germs' through our microscopes, and enjoyed dressing up as different occupations – a paramedic, a nurse, a doctor, a postman. We have a very special message displayed in our window for people in our community to see when they walk or drive past our nursery.

## Fairy Garden

Upon our return to nursery, lots of children have said that they have been to visit the fairy garden in Ashworth Valley woods (which is where we do Forest School) – As we are unable to take part in Forest School at the moment, we decided to bring the Fairy Garden to us! We have worked together to create a beautiful space for us all to enjoy together.



## Space

After the some of the children shared their experiences of watching the Rocket Launch at home, we watched it together at nursery and then created our very own space station and Rocket Launch Pad. We made paper plate Aliens, our own moon rocks, and enjoying taking part in different experiments including the balloon rocket experiment, and the fizzing bottle launch experiment!

## Thank-you

Thank-you to all parents who have sent in pictures of all of the fun things that you have been doing with your children during lockdown. We have loved seeing these upon our return to nursery and we be creating our own lockdown time capsule to share with children upon their return.

We are so happy to be back in nursery with all of our friends and we hope to see you all soon – stay home and stay safe

Thank-you for your continued support.

Our Contact Details are as follows:-

Tel – 01706 352000 - Email: [ffn3@fisherfeldchildcare.co.uk](mailto:ffn3@fisherfeldchildcare.co.uk)

Or keep in touch with iConnect/ParentZone, please ask a member of staff if you need help