

## Little Lambs

The Little Lambs have been focusing on enhancing opportunities to support the children's understanding of the world. The children have enjoyed going on walks out of the nursery, this has included going down to the farm where they saw some goats and some cows, and they also brought in their own teddy bears from home and went on a teddy bears picnic over in the woodland area.



## Dates for the Diary

Thursday 31st October:

### Halloween Ball

6.00pm - 7.00pm

Saturday 26th October:

### Autumn Fayre

11.30am - 1.30pm

Wednesday 13th November:

### Parents Evening

5.30pm - 7.30pm

### Farmers Christmas Performance:

Tuesday 10th December  
10.00am

Wednesday 11th December  
2.00pm

Thursday 12th December  
2.00pm

### Lambs Christmas Craft Morning:

Monday 16th December  
9.30am - 11am



The Little Lambs also enjoyed their topic on sensory play and have enjoyed taking part in lots of different activities. They have been exploring the edible paint; they used various textures to paint their own pictures and explored getting messy in the mud. This topic was also extended by following it up with a sensory morning for the lamb's parents to attend.

Thank you to all parents who have sent in family pictures which has helped us to enhance our family board within the room.

## QUESTION OF THE MONTH

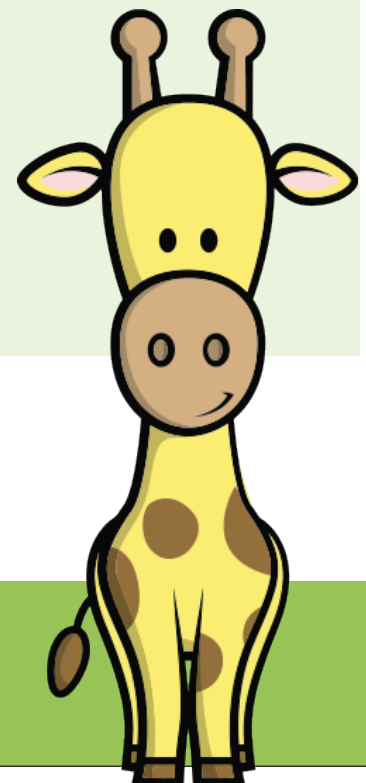
November: Do you know what mindfulness is?

December: Have you applied for a school place for your child?

Our Contact Details are as follows:-

Tel – 01706 352000 - Email: [ffn3@fisherfeldchildcare.co.uk](mailto:ffn3@fisherfeldchildcare.co.uk)

Or keep in touch with iConnect/ParentZone,  
please ask a member of staff if you need help



## Little Farmers

The Farmers have continued to focus on enhancing opportunities to support the children's physical development skills and have had so much fun joining in with Forest school sessions along with Cherine and Jessica where they have been exploring the woodlands at Ashworth Valley.



The Farmers have been enjoying fortnightly trips to Ashbourne residential home with Catherine and Susana. This has helped to enhance their understanding of the world as they learn about people who are different to them. The Farmers have shown great enthusiasm towards their trips and the residents are always very excited to see them.



The Farmers have also shown great interest in colour and colour mixing so we have been carrying out various experiments. These include a magic milk experiment, the skittles experiment, and the erupting volcano experiment. The Farmers took on mini scientist roles as they predicted what would happen and tested their ideas.



If you would like to book a party at Running Wild, log onto [www.runningwildparties.co.uk](http://www.runningwildparties.co.uk) where you can check availability and book online. Alternatively ring 0161 653 1996 and speak to Paula.

Our Contact Details are as follows:-

Tel – 01706 352000 - Email: [ffn3@fisherfeldchildcare.co.uk](mailto:ffn3@fisherfeldchildcare.co.uk)

Or keep in touch with iConnect/ParentZone,  
please ask a member of staff if you need help