

Lambs & Ducks

The Little Lambs and Ducklings have been developing their physical play with regular P.E. sessions and incorporating physical play into our daily key person sessions. After attending 'Primed for life' training on the Fisherfield Training Conference, the staff have created a 'Mini Movers' bag. Children love using the materials and doing different activities with them such as 'Going on a bear hunt' and using them in stretches and yoga positions.



Farmers

The Farmers have been focusing on the topic 'All About Me' and extending this to various different topics such as 'Our Bodies' where the children have been learning about the different parts of the body and how they are used. They have also been learning about different countries and cultures. We have had lots of regular parent input throughout the last couple of months including parents visiting and reading in Polish, Urdu and Romanian. Some of our parents also kindly came in and helped us make pakoras and bake! Thank you to all the parents who spared their time to offer the children these rich, unforgettable experiences.

Family Fridays

On the last Friday of every month, we will be introducing 'Family Fridays' to Redvales.

From 9 – 11am you are welcome to join in with your child's morning at the nursery and be able to participate with your child's daily routine, snack time and free flow in their core play time.

Our Contact Details are as follows:-

Tel – 0161 761 5770 - Email: ffn7@fisherfeldchildcare.co.uk

Or keep in touch with iConnect/ParentZone,
please ask a member of staff if you need help

SAVE THE DATE

Friday 29th March

Mothers and Grandma
Creative Morning
9:30am – 11:00am

Wednesday 24th April

Planting and growth stay
and play
(Time to be confirmed)

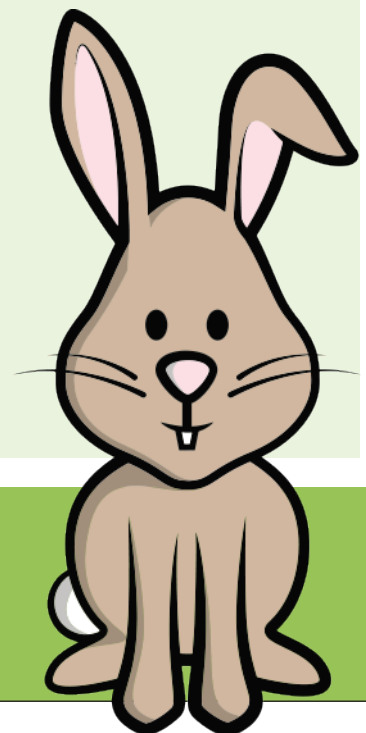
OTHER EVENTS

Thursday 7th March

World book day
Dress as your favourite
character

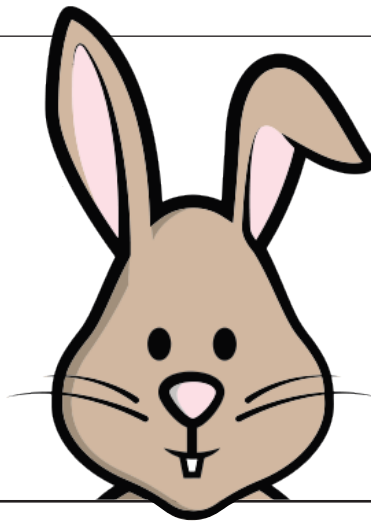
**Thursday 14th March
and Friday 15th March**

Red Nose Day
sponsored walk



Thank you!

Thank you to all our new parents for attending our attachment workshop on the 28th January!



Question of the month

March

We are looking at developing our mealtime menus. What sort of healthy meals and snacks does your child enjoy at home?

April

Do you understand the meaning of school readiness?

New Topics

March – April – Throughout the whole nursery we will be looking at growth and animals. Focusing on season changes, weather and planting. Ducks are currently changing a board in their room to a weather board with sensory weather bottles, different clothing and books relating to it. Farmers are currently changing a board to a Forest School board as they will be involved in 'Forest School' and outdoor play over the next few months. Forest School relates to using the outdoors to aid children's development. We will be sharing more information on this with you soon – keep an eye out on our board!



If you would like to book a party at Running Wild, log onto www.runningwildparties.co.uk where you can check availability and book online. Alternatively ring 0161 653 1996 and speak to Paula.

Our Contact Details are as follows:-

Tel – 0161 761 5770 - Email: ffn7@fisherfeldchildcare.co.uk

Or keep in touch with iConnect/ParentZone,
please ask a member of staff if you need help