



## Little Lambs

Little Lambs children have enjoyed investigating 'loose parts play' with natural objects. They have used items such as: curtain rings and cotton reels to develop their fine motor skills, imagination and hand-eye co-ordination. Furthermore, the use of natural colours helps to establish a calm learning environment where their curiosity can be nurtured!

## Ducklings

We have recently introduced finger gym activities to our curriculum. The purpose of this is to support children to develop the strength and co-ordination needed in their arms, hands and fingers to write. The children have really enjoyed the range of activities set up. Activities include making their own musical instruments by picking up items and posting them into a container and threading rings onto tubes.



## Little Farmers



The Farmers have been fascinated with the changing season. We went on a nature walk to Jubilee Park, where we found: conkers, pine cones, twigs and leaves. We discussed the changing colour and texture of the leaves and predicted what may have caused this. We created leaf prints with the items we have discovered on our walk and thoroughly enjoyed exploring the different shapes and prints these created!

## Parents as Partners update

**Tuesday 13th November 2018 6:30pm - 7:00pm and 7:00pm – 7:30pm**



We will be hosting the next Parents as Partners meeting during Parents Evening. We are offering two time slots to allow for as many parents to attend and contribute as possible. We will be reviewing the nursery development plan and self-evaluation through a collaborative workshop. Come prepared to contribute your ideas and thoughts on how we can improve the service we offer. To book, speak to a member of the Leadership Team and advise us of your preferred time slot.

## Upcoming Events

### Wednesday 31st October

6:00-7:30pm  
Halloween Disco  
£3 per ticket per child

### Tuesday 13th November

6:00-8:00 – Parents Evening  
(see your child's key worker to book a time)

### Friday 16th November

Family Stay and Play for Charity - £3 per adult

### Saturday 24th November

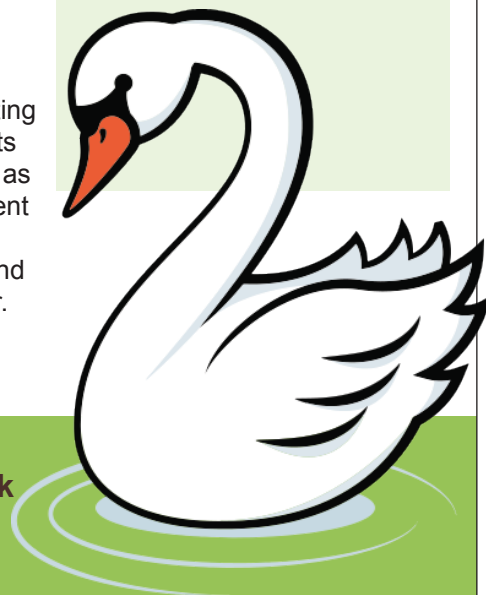
10am-1pm – Christmas Fair  
(more details to be released soon!)

### Tuesday 4th December

Farmers Christmas Nativity  
(2-3pm)  
Tickets £3 per adult

### Wednesday 5th December

Farmers Christmas Nativity  
(10-11am)  
Tickets £3 per adult



Our Contact Details are as follows:-

Tel – 0161 653 1996 - Email: [ffn10@fisherfeldchildcare.co.uk](mailto:ffn10@fisherfeldchildcare.co.uk)

Or keep in touch with iConnect/ParentZone,  
please ask a member of staff if you need help



Merry Christmas  
and a  
Happy New Year  
from all the staff  
at Fisherfield!

### Donations welcome!



We would like to incorporate more 'real-world' items into our home corners and mud kitchens. If you have any old unused remotes, tv's, laptops, microwaves, child friendly furniture etc. then please consider donating these to nursery! All items will be fully risk assessed before use.



## CHRISTMAS HOLIDAY DATES

For 15 hour funded children the term will end on  
**Friday 14th December 2018**  
and resume on **Monday 7th January 2019.**

For Term Time only children the term will end on  
**Friday 21st December 2018**  
and resume on **Monday 7th January 2019.**



For all others, we will close for Christmas on  
**Monday 24th December 2018 at 1:00pm**  
and return on **Thursday 3rd January 2019.**



Party time!

If you would like to book a party at Running Wild, log onto [www.runningwildparties.co.uk](http://www.runningwildparties.co.uk) where you can check availability and book online. Alternatively ring 0161 653 1996 and speak to Paula.

Our Contact Details are as follows:-

Tel – 0161 653 1996 - Email: [ffn10@fisherfeldchildcare.co.uk](mailto:ffn10@fisherfeldchildcare.co.uk)

Or keep in touch with iConnect/ParentZone,  
please ask a member of staff if you need help